

20016 PERO (Milano) Italy
Via Leonardo da Vinci 14
Tel. +39 02 339403.1
Fax. +39 02 3538641
www.fluiten.it
E-mail: info@fluiten.it



FLUITEN HEADQUARTER



Since 1962, offering:

- Technology
- Quality Products
- Reliable Applications
- Creativity
- Field experience
- Service
- Safety

10.000 sq/m

120 Specialized Employees in Europe

Research - Engineering Department

Manufacturing - Service



FLUITEN COMPANY

LOCATION



ITALY
MILANO-PERO



FLUITEN COMPANY

MARKET SPECIALITIES



CHEMICAL



REFINERY



PULP AND PAPER



PHARMACEUTICAL



NAVAL



POWER

FLUITEN COMPANY

HUMAN RESOURCES



SALES OFFICE



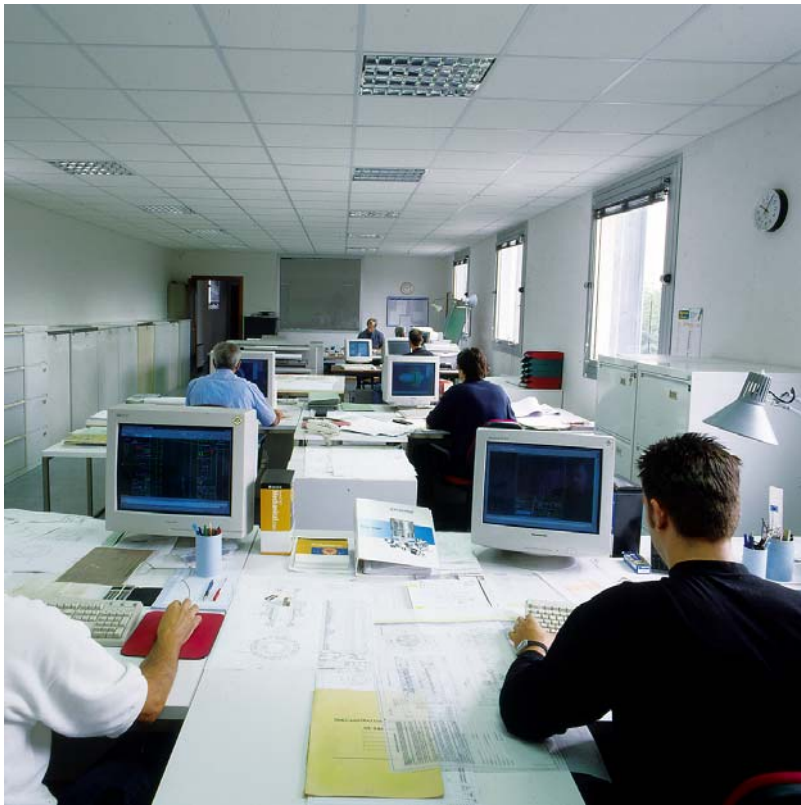
EXPORT DEPARTMENT

ENGINEERING DEPARTMENT



F.E.A. - CAD

ENGINEERING/MANUFACTURING PROCESS



FLUITEN COMPANY

LAPPING DEPARTMENT



STANDARD LAPPING PLATES FOR
SIZES FROM 20 mm TO 150 mm

FLUITEN COMPANY

LAPPING DEPARTMENT



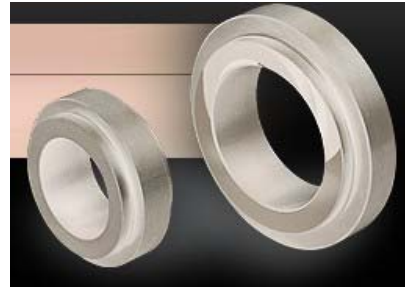
LAPPING CAPABILITY FOR SIZES up TO 500 mm

FLUITEN COMPANY

LAPPING DEPARTMENT



MONOCROMATIC SODIUM LIGHT
FOR FACES SURFACE CHECK
0,0025 mm = LIGHT BAND



QUALITY CONTROL DEPARTMENT



ADD PRODUCT VALUE.....
AND SAFE
PERFORMANCE



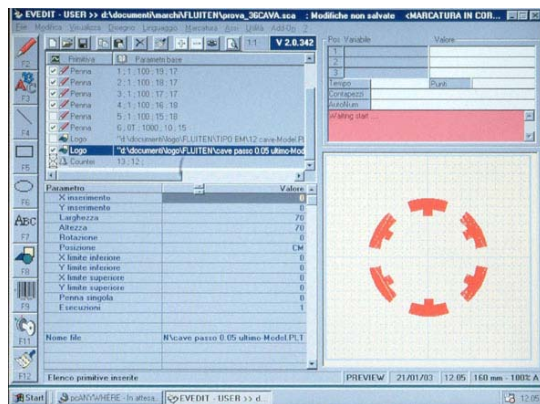
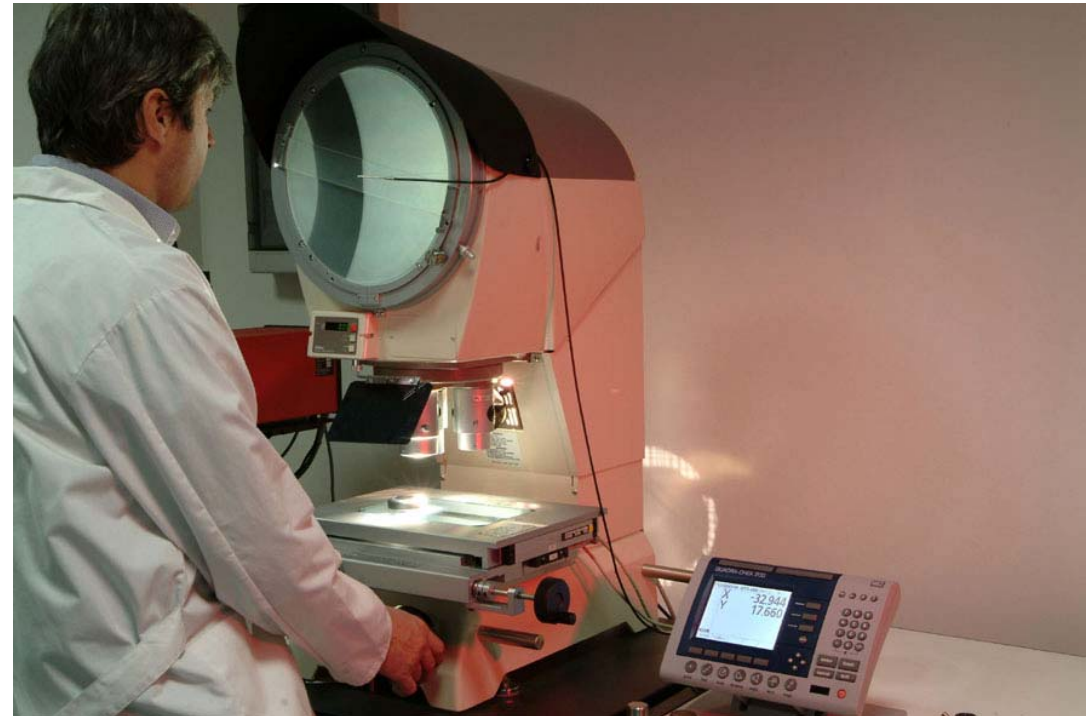
AXIS PARALLELISM CHECK



HIGH SPEEDS... HIGH PRECISION TOLERANCE

FLUITEN COMPANY

GAS SEALS GROOVE PROFILE RESEARCH



SPECIFIC GROOVES DEFINITION
ACCORDING PRESSURE AND SPEED

FLUITEN COMPANY

TEST LABORATORY



TEST LIMITATIONS

SPEED: UP TO 30.000 RPM

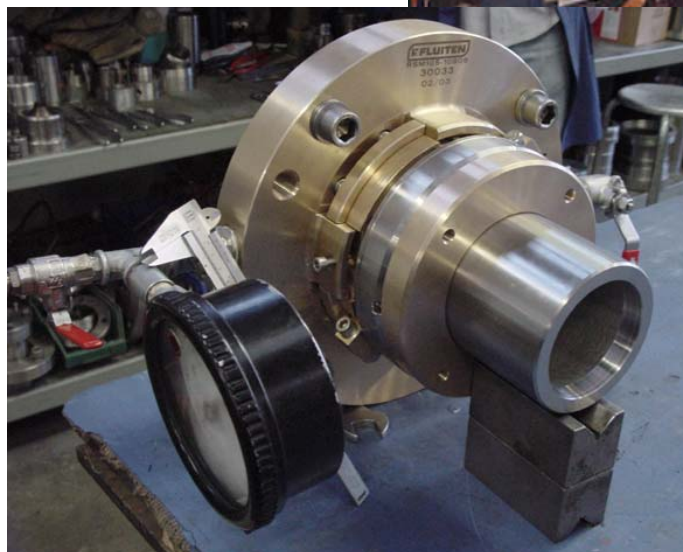
PRESSURE: UP TO 150 BAR

FOR PUMPS:

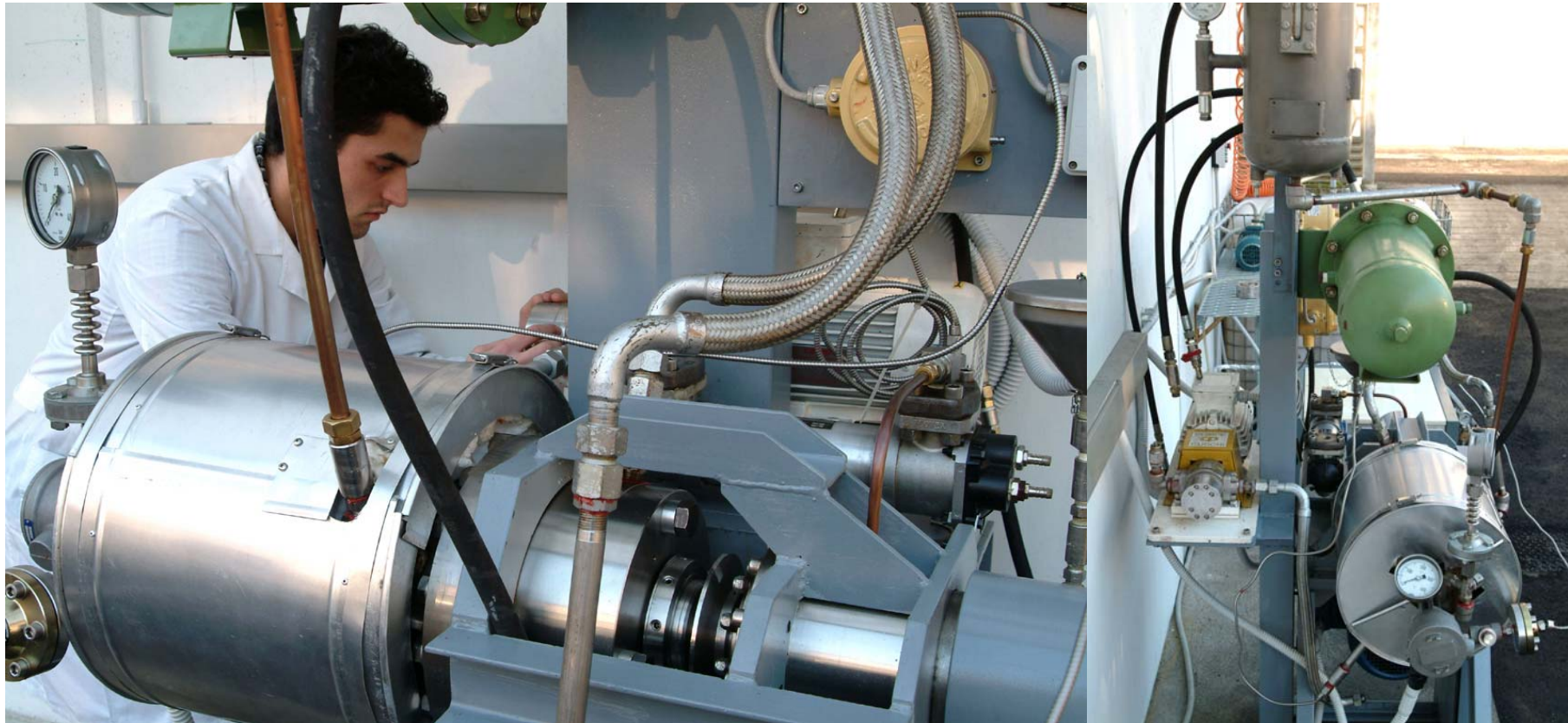
SIZES: UP TO 150 mm

FOR MIXERS:

SIZES: UP TO 300 mm



TEST FOR API 682 SEAL RANGE



ACCORDING API 682 TEST CYCLES

FLUITEN COMPANY

FAILURE ANALYSIS LABORATORY



IMPROVING Performance and
MTBF

FLUITEN COMPANY

TRAINING



THEORETICAL



PRACTICAL



COMPUTERIZED STOCK DEPARTMENT



12.000 ITEMS STOCKED..... 50.000 STOCKING CAPABILITY

FLUITEN COMPANY

ASSEMBLING DEPARTMENT



FAST SERVICE and CONTROLLED REPAIR PROCEDURE

FLUITEN COMPANY

INTERNATIONAL LOCATIONS



- 
- A light blue world map with small red dots indicating international locations. The dots are concentrated in Europe, Africa, and Asia, with a few in South America and Australia.
- *GERMANY (FLUITEN)*
 - *UK (FLUITEN)*
 - *FRANCE*
 - *SPAIN (FLUITEN)*
 - *HOLLAND*
 - *BELGIUM*
 - *DENMARK*
 - *AUSTRIA*
 - *SWITZERLAND*
 - *CZECH REPUBLIC (FLUITEN)*
 - *SLOVAKIA REBUBLIC*
 - *POLAND*
 - *HUNGARY*
 - *CROAZIA/BOSNIA*
 - *RUMENIA*
 - *ARGENTINA*
 - *AUSTRALIA*
 - *EGYPT*
 - *IRAQ*
 - *MAROCCO*
 - *UNITED ARAB EMIRATES*
 - *NIGERIA*
 - *MALAYSIA (FLUITEN)*

CERTIFICATE ISO 9001-2000

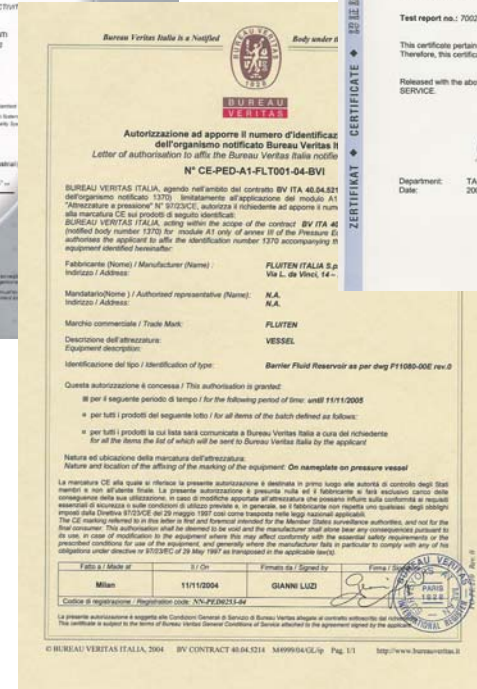


QUALITY SYSTEM:

RINA

APPLIED SPECIFICATIONS:

- UNI EN 12756
- API 682
- ATEX
- FDA
- 97/23/CE/P.E.D.





In 2003, a 50% joint venture between Fluiten and the Johnson Corporation, a worldwide leader in the market of rotary joints, is constituted

